

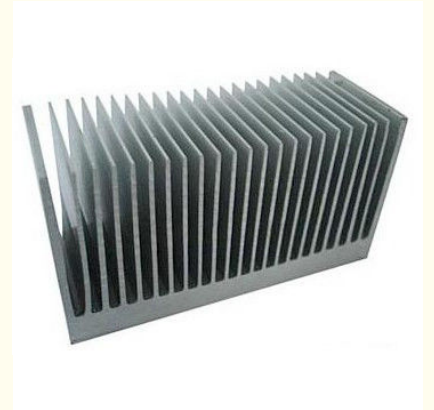


Fluorocarbon Powder Spray Coated Aluminum Extrusion Heatsink For Aluminum Radiator

Our Product Introduction

Basic Information

- Place of Origin: China
- Brand Name: HT
- Certification: CA ,CE
- Model Number: KTH-007
- Minimum Order Quantity: 1 ton
- Packaging Details: Ep paper ,kraft ,pallet
- Delivery Time: 20days
- Payment Terms: T/T ,L/C
- Supply Ability: 100 000ton each month



Product Specification

- Product Name: Aluminum Heatsink Extrusion Profiles
- Alloy: 6063,6061,6005
- Material: Aluminum
- Surface Treatment: Mill Finished,Anodized ,Electrophoretic Coated,Powder Spray Coated
- Deep Process: Milling, Drilling, Bending,Cutting
- Temper: T4, T5, T6 ,T66
- Highlight: **heatsink extrusion profiles, aluminium extrusion heat sink profiles**

for more products please visit us on aluminumextrusion-profiles.com

Product Description

Fluorocarbon Powder Spray Coated Aluminum Extrusion Heatsink For Aluminum Radiator

- 1.Material:Aluminum
- 2.Alloy:6063,6061,6005 or according to customer' s choice
- 3.Surface Treatment:Mill Finished,Anodized ,Electrophoretic coated,Powder spray coated,Fluorocarbon powder spray coated /PVDF Paint, Drawbench,Steel polished,Wood grain coated /Wooden transfer .
- 4.Deep process:Milling, Drilling, Bending,Cutting.
- 5.Application:Industry Aluminum profile used in cars, trains machinery ,electronics, medical and other industrial filed . In terms of hardware, machinery, electromechanical parts, solar PV products, aluminum frames are adopt as important auxiliary materials. We also have aluminum profiles for radiators, fitness machinery, buildings, lighting instrument, windpipes, oil pipelines, for instance.
- 6.Color:clear, satin, bronze, black, golden, silver, other multicolor
- 7.Temper: T4, T5, T6 ,T66

Description:

| Item | Aluminum extrusion heat sink with CNC machining |
|--------------|---|
| Material | Alloy 6063, 6061 or according to customer' s choice |
| Temper | T3, T4, T5, T6 |
| Surface | Anodize (clear, satin, bronze, black, golden, silver, other multicolor) , electrophoresis, powder coating, PVDF coating, wood grain painting, etc. |
| MOQ | 1 ton. Usually 12 tons for a 20 feet container; 24 tons for a 40 feet container. |
| Profile type | Aluminum Extrusion Heatsink which is used in medical equipment ,LED Heat sink ,CPU Cooler , Led Lamp ,Led light , notebook cooler ,and some other filed . |
| Processing | Aluminum profile extruding ,Precise cutting,Straight rectification,Bending,Drilling,Tapping,Stamping,Pulling,CNC mill, CNC lathe. For precious machining and cutting, length tolerance can be 0.2mm, hole tolerance can be 0.05mm . |
| Moulding | 1. Using our mould, free; 2. Using customer' s drawing, opening mould fee need to be paid . |
| Certificate | ISO14001:2004, ISO9001:2000 |
| Standard | Meet the China national standard GB/T6892-2006 and Europe standard EN12020-1,2(2001) and American standard AAMA611-98. |
| FOB Port | Shanghai, etc. |

Applications:

Industry Aluminum profile used in cars, trains machinery ,electronics, medical and other industrial filed . In terms of hardware, machinery, electromechanical parts, solar PV products, aluminum frames are adopt as important auxiliary materials. We also have aluminum profiles for radiators, fitness machinery, buildings, lighting instrument, windpipes, oil pipelines, for instance.



Specifications:

1.Primary Technical Data

1)Chemical composition

| Alloy | Si | Fe | Cu | Mn | Mg | Cr | Zn | Ti | Impurity | Al |
|-------|---------|---------|----------|------|----------|-----------|------|------|----------|------|
| 6063 | 0.2-0.6 | 0.35 | 0.1 | 0.1 | 0.45-0.9 | 0.1 | 0.1 | 0.1 | 0.15 | Rest |
| 6061 | 0.4-0.8 | 0.7 | 0.15-0.4 | 0.15 | 0.8-1.2 | 0.04-0.35 | 0.25 | 0.15 | 0.15 | Rest |
| 6060 | 0.3-0.6 | 0.1-0.3 | 0.1 | 0.1 | 0.35-0.6 | - | 0.15 | 0.1 | 0.15 | Rest |
| 6005 | 0.6-0.9 | 0.35 | 0.1 | 0.1 | 0.40-0.6 | 0.1 | 0.1 | 0.1 | 0.15 | Rest |

2)Mechanical property

| Alloy | Temper | Tensile strength | Yield strength | Elongation |
|-------|--------|------------------|----------------|------------|
| 6063 | T5 | ≥ 160Mpa | ≥ 110Mpa | ≥ 8% |
| | T6 | ≥ 205Mpa | ≥ 180Mpa | ≥ 8% |

| | | | | |
|------|----|----------|----------|------|
| 6061 | T6 | ≥ 265Mpa | ≥ 245Mpa | ≥ 8% |
|------|----|----------|----------|------|

2.Specifications:

Excellent material for smooth and subtle edges.
 Elegant appearance.
 Surface treatment: colorful anodized or electrostatic powder coated.
 Suitable for constructions and other industrial purposes.
 Customized surface finishes are welcome.

Competitive Advantage:

- 1)Engineering design and support.
- 2)Aluminum profiles deeply processing:cutting,punching,drilling,milling,and fabricating.
- 3)High Quality system, strictly inspection during production and whole inspection before package.
- 4)Good performance, product warranty for 15 years.



HENTEC Hentec Industry Co.,Ltd

☎ +86-13861643436 ✉ aluminum@hentec.com.cn 🌐 aluminumextrusion-profiles.com

Qinfeng Road No.555 Huashi Town Jiangyin Jiangsu China (mainland) 214421